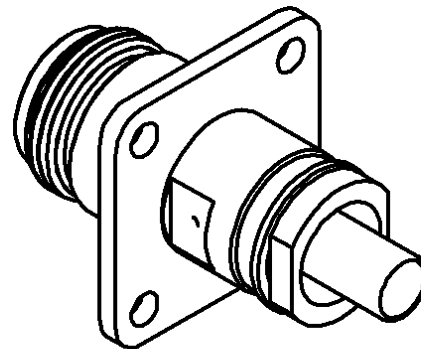
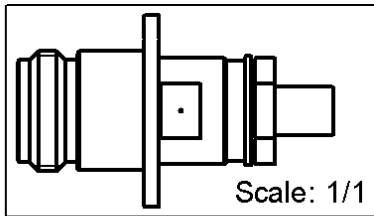
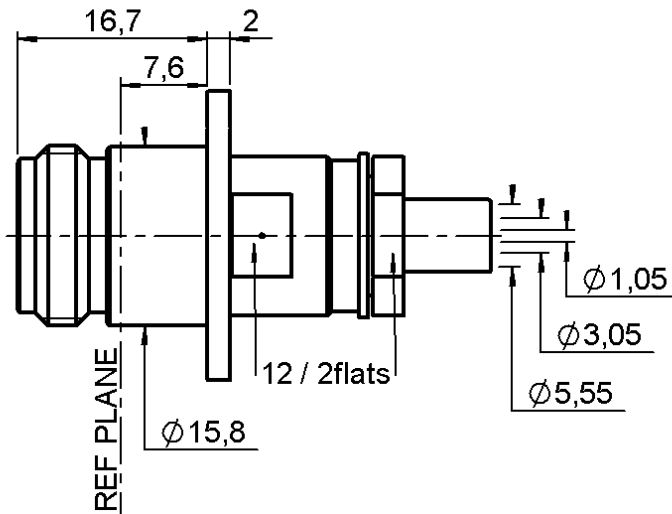
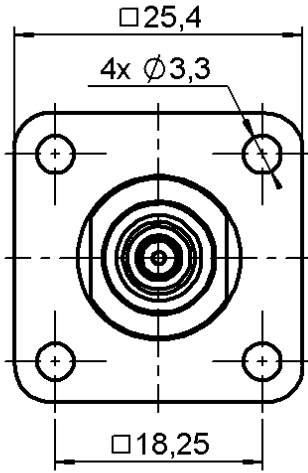


STRAIGHT SQUARE FLANGE JACK

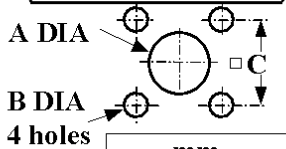
R161.297.000

CRIMP TYPE - CABLE 5/50 D

Series : N



PANEL CUT OUT



	mm	
	Maxi	mini
A	16.3	16.1
B	3.3	3.2
C	18.35	18.15

All dimensions are in mm.



COMPONENTS	MATERIALS	PLATINGS (µm)
BODY	BRASS	NICKEL .
CENTER CONTACT	BERYLLIUM COPPER	GOLD 1.3 OVER NICKEL 2
OUTER CONTACT	BRASS	NICKEL .
INSULATOR	PTFE	
GASKET	-	
OTHERS PARTS	BRASS	NICKEL .
-	-	-
-	-	-

Issue : 0708 G

In the effort to improve our products, we reserve the right to make changes judged to be necessary.



STRAIGHT SQUARE FLANGE JACK

R161.297.000

CRIMP TYPE - CABLE 5/50 D

Series : N

PACKAGING

Standard	Unit	Other
50	'W' option	Contact us

SPECIFICATION

ELECTRICAL CHARACTERISTICS

Impedance	50	Ω
Frequency	0-3	GHz
VSWR	1.15 + 0,0000	x F(GHz) Maxi
Insertion loss	0.048	\sqrt{F} (GHz) dB Maxi
RF leakage	- (101)	- F(GHz)) dB mini
Voltage rating	850	Veff Maxi
Dielectric withstanding voltage	1500	Veff mini
Insulation resistance	5000	M Ω mini

CABLE ASSEMBLY

Stripping	a	b	c	d	e	f
mm	9,00	9,00	23,0	0,00	0,00	0,00

Assembly instruction :

Recommended cable(s)

RG 223
KX 23
RG 142 FTX
RG 400
RG 142

MECHANICAL CHARACTERISTICS

Center contact retention		
Axial force – Mating end	27	N mini
Axial force – Opposite end	27	N mini
Torque	NA	N.cm mini

Cable retention

- pull off	200	N mini
- torque	NA	N.cm

TOOLING

Part Number	Description	Hexagon
.	.	.
R282.235.011	CRIMPING DIES M22520/5-11	5.41
R282.223.000	CRIMPING TOOL	5.41
R282.246.000	CRIMPING DIES M22520/5-05	5.41
282.291	CRIMPING TOOL M22520/1-01	2x4 (pos. 7)
282.997	LOCATOR	rouge
.	.	.
R282.293.000	CRIMPING TOOL M22520/5-01	-

Recommended torque		
Mating	NA	N.cm
Panel nut	NA	N.cm
Clamp nut	370	N.cm
A/F clamp nut	12,0000	mm

Mating life	500	Cycles mini
Weight	40,8398	g

ENVIRONMENTAL

Operating temperature	-55/+155	$^{\circ}$ C
Hermetic seal	NA	Atm.cm3/s
Panel leakage	NA	

OTHERS CHARACTERISTICS

Issue : 0708 G

In the effort to improve our products, we reserve the right to make changes judged to be necessary.



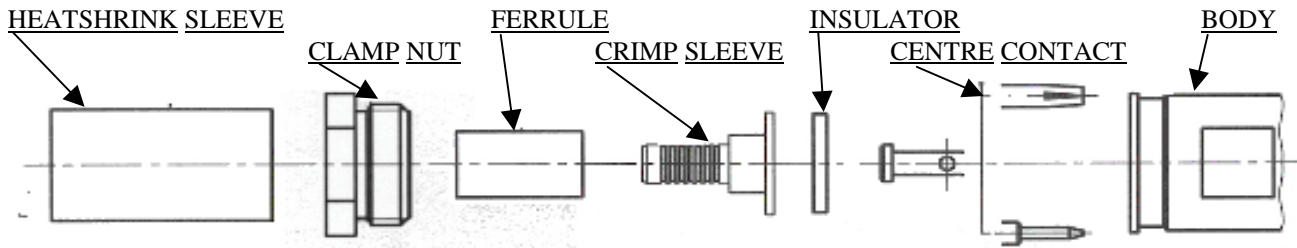
STRAIGHT SQUARE FLANGE JACK

R161.297.000

CRIMP TYPE - CABLE 5/50 D

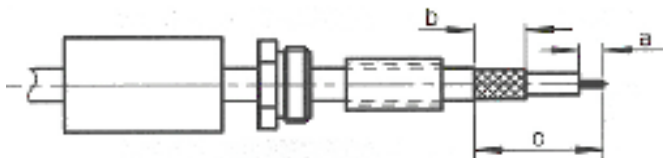
Series : N

COMPONENTS



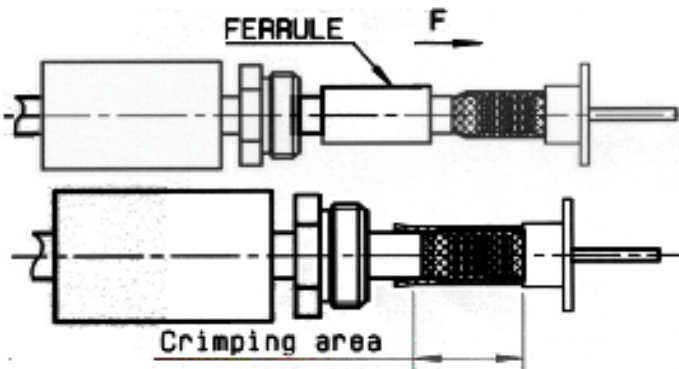
1

Slide onto the cable the heatshrink and the ferrule.
Strip the cable.



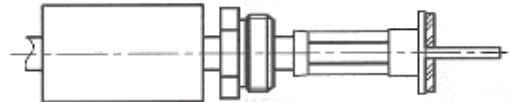
2

Slide the clamp nut onto the crimp sleeve.
Slide sub-assembly under the braid.
Slide ferrule over the braid against clamp nut. (In direction F)
Crimp the ferrule with crimping tool + dies.



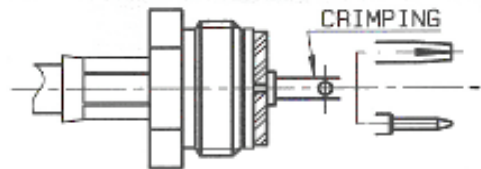
3

Cut the dielectric flush to crimp sleeve.
Mount insulator against crimp sleeve.



4

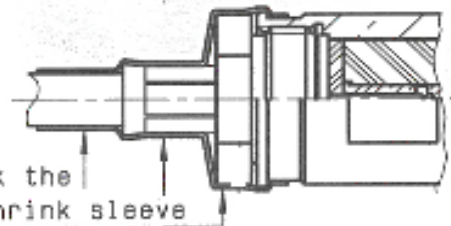
Slide the centre contact onto the cable inner conductor against insulator.
Crimp centre contact with crimping tool and positioner.



heatshrink sleeve not shown

5

Screw sub-assembly into the connector body.
(recommended coupling see connector TDS)
Slide sleeve over ferrule and Heatshrink sleeve in place.



Issue : 0708 G

In the effort to improve our products, we reserve the right to make changes judged to be necessary.

